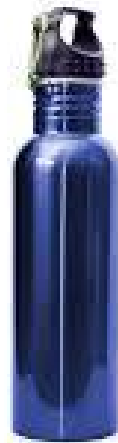
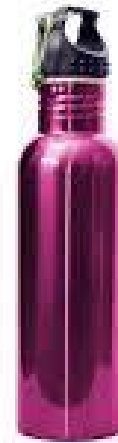
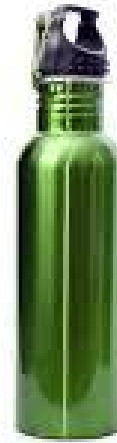




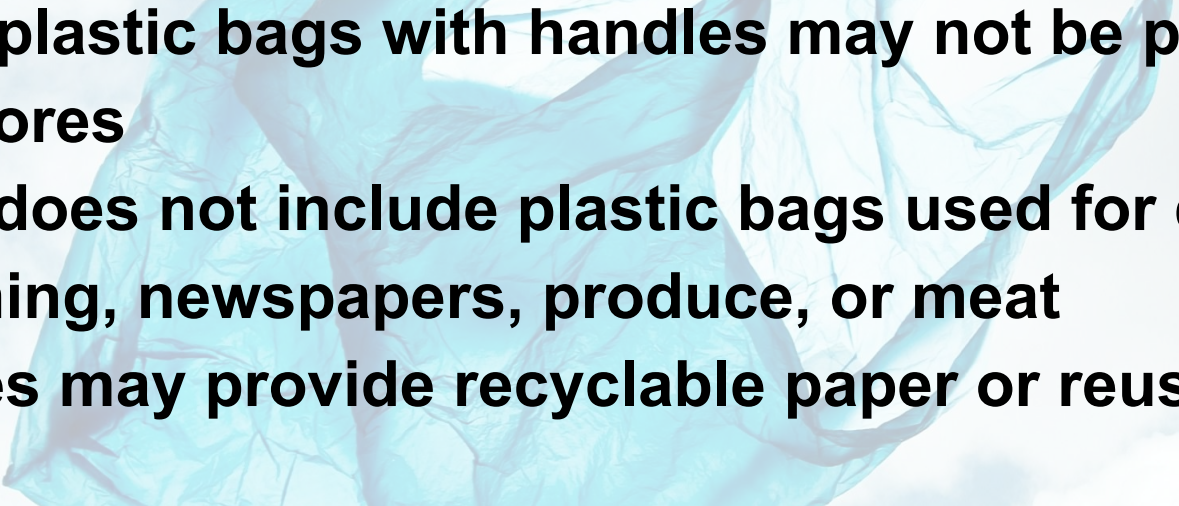
WE WANT YOU!

BYOBB



**BRING YOUR OWN
BAGS & BOTTLES**

Proposed Bag Article: Reducing the Source

- **Thin plastic bags with handles may not be provided by stores**
 - **This does not include plastic bags used for dry cleaning, newspapers, produce, or meat**
 - **Stores may provide recyclable paper or reusable bags**
- 

Proposed Bottle Petition

Plastic water bottle sales limitation

- Non-reusable water bottles 1 liter or less would *not* be sold in town
- Does not include carbonated or flavored water
- Best practice: Bring your own refillable water bottle



Environmental Impact of Plastic

- Lots of natural resources are used to manufacture single-use water bags and bottles
- Once used, single-use water bottles only have a 30% recycling rate



The background of the slide is a close-up, slightly blurred view of numerous blue plastic bottle caps scattered across the surface. The caps are of various sizes and orientations, creating a textured, repetitive pattern of blue and white. The lighting is bright, highlighting the ridges and grooves of the caps.

Health Concerns

- chemicals in the plastic bottles that seep into the water and can cause medical issues
- Tap water is regulated by the EPA and tested multiple times a day -- bottled water is not as strictly regulated

Single-Use Water Bottle Alternatives



Best Alternative



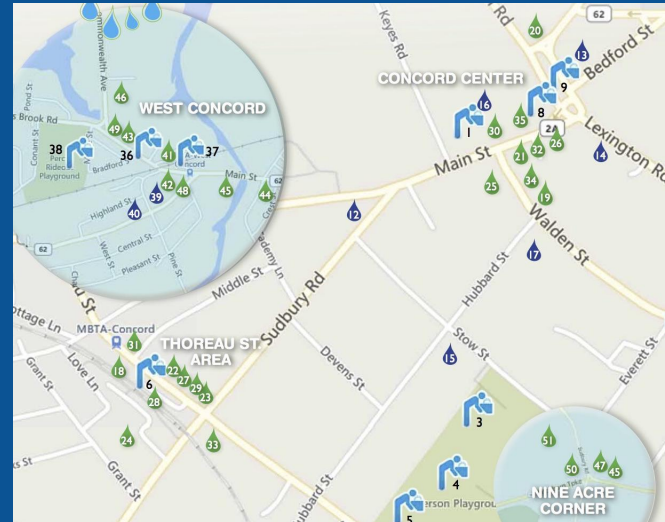
Additional Alternative



Opportunity

Refill Stations

- **Attract more customers** by offering water at refill stations or taps.
- We are in the process of creating a **Tap Map**, we invite businesses to participate in this positive informational campaign



Impact on Businesses

We have reached out to the manager of Crosby's in Concord and asked about the impact of the bottle ban on their business. He said that:

- Customers had mentioned the change in packaging from plastic to recyclable, but that they were **still purchasing water**
- There had been **no drop in sales**
- **No drop in the number of customers** coming in

He reassured that Lincoln businesses "**have nothing to worry about**" and reiterated that the bottle ban has had **no impact** on Crosby's bottom line

Steps moving forward...

- Meeting with Lincoln committees
 - South Lincoln Planning & Implementation
 - Rural Land Foundation
 - Board of Health
 - Conservation
 - Green Energy
 - Council on Aging
 - Board of Selectmen
- Meeting with Lincoln businesses
- Community outreach (working with St. Anne's and Mothers Out Front)
- Return in March for Lincoln Town Meeting

Local supporters

Sustainable Sudbury

Assabet NWR volunteers

MassGreen.org

Mothers Out Front (Lincoln)

First Parish of Sudbury

Casella Recycling (Sudbury Contractor)

Sierra Club Massachusetts

Concord On Tap Team

Humane Society of U.S.

350 Mass Metrowest

St Anne's Episcopal Church

UU Green Committee

Concluding Message...



Thank You!!